



# GAT MONTHLY MEMBERSHIP PROGRESS REPORT

Results as of: 5/31/2022

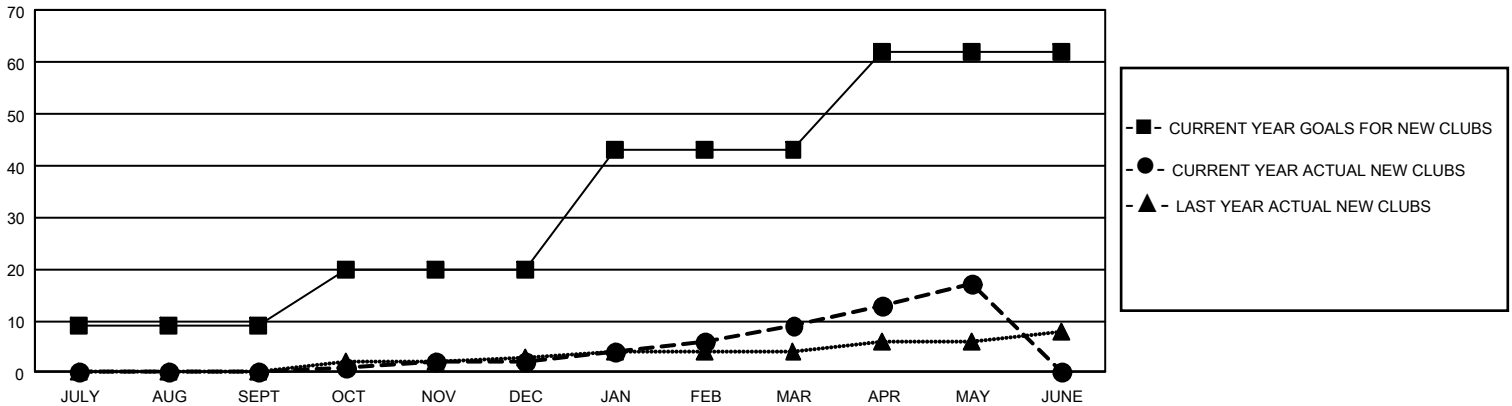
## GAT Constitutional Area 5 - Japan

REPORT DOES NOT INCLUDE CLUBS IN UNDISTRICTED AREAS.

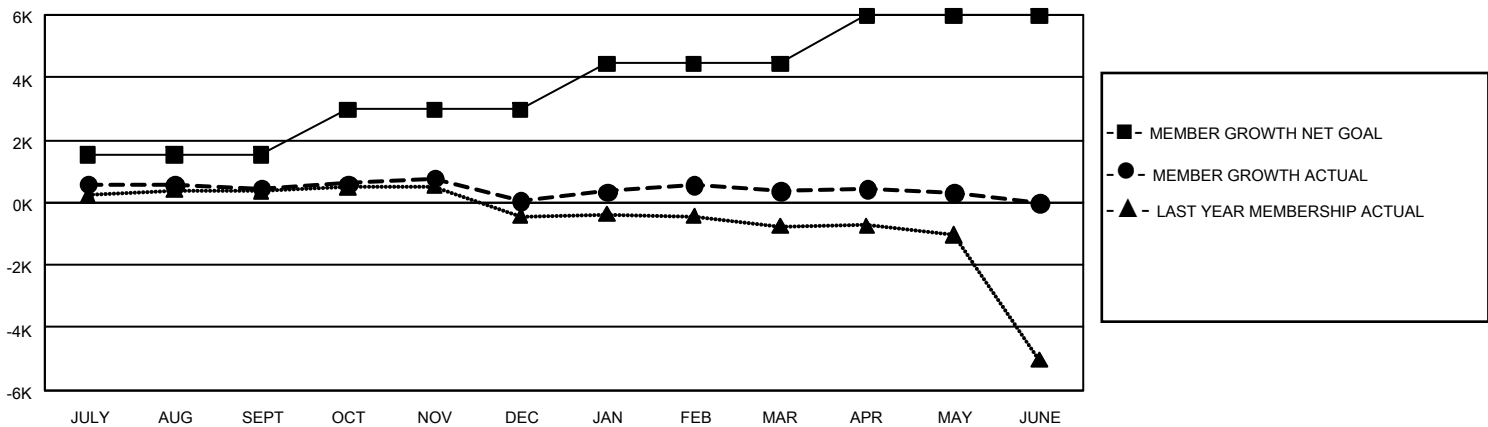
Clubs			
RESULTS FOR 2021-2022			
QUARTER	NEW CLUB GOAL	NEW CLUBS	DROPPED CLUBS
JULY/AUG/SEPT	27	0	5
OCT/NOV/DEC	33	2	10
JAN/FEB/MAR	69	7	4
APR/MAY/JUNE	57	8	3

Members			
RESULTS FOR 2021-2022			
QUARTER	MEMBER GROWTH NET GOAL	MEMBER GROWTH ACTUAL	DROPPED MEMBERS ACTUAL (including transfers)
JULY/AUG/SEPT	1540	1,942	1,350
OCT/NOV/DEC	1435	1,429	1,776
JAN/FEB/MAR	1461	1,637	1,293
APR/MAY/JUNE	1540	1,239	1,242

GOALS AND ACTUAL NEW CLUBS CUMULATIVE



GOALS AND ACTUAL MEMBERS CUMULATIVE



<b>DROPPED CLUBS: 22</b>	<b>1,807 CLUBS OF 2,867 ADDED 1 OR MORE NEW MEMBERS</b>	<b>GENDER DISTRIBUTION</b>	
		MALE 77,905 (76.47%)	FEMALE 23,969 (23.53%)
<b>DROPPED MEMBERS</b>		NON BINARY 1 (0.00%)	PREFER NOT TO ANSWER 5 (0.00%)
DECEASED 802	<a href="#">CLICK HERE FOR CUMULATIVE MEMBERSHIP DATA</a>	<b>TOTAL FAMILY UNIT MEMBERS 35,125</b>	
CLUB CANCELLED 45		<b>FAMILY MEMBERS PAYING HALF DUES 19,426</b>	
OTHER 4,815			
<b>TOTAL 5,662</b>			